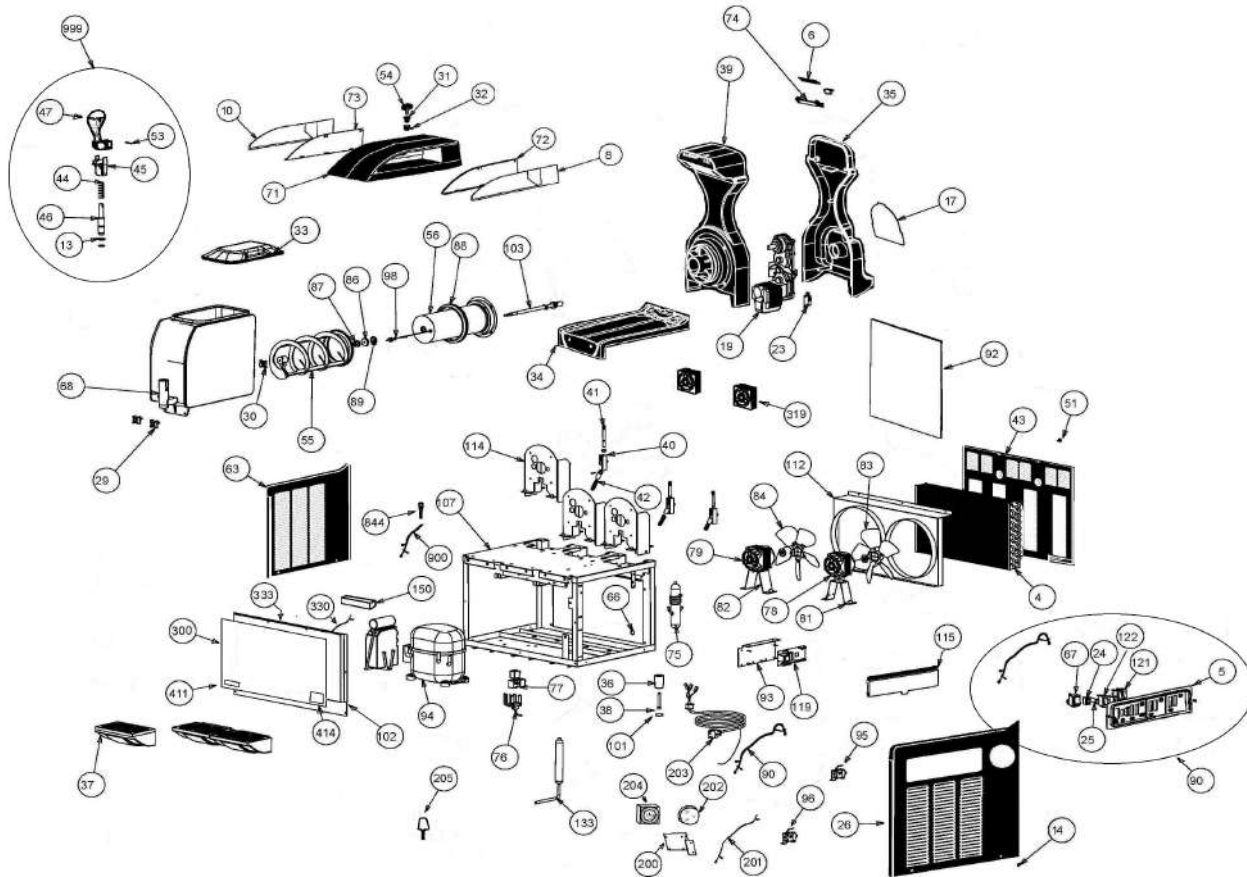


560539-560541-562498

I-PRO3M 115/60 WITH TIMER AND LED PANEL



Position #	Part #	DESCRIPTION
0	03.IP0006.001	I-PRO 3 PACKAGING
0	03.IP0007.001	I-PRO 3 PROTECTION
0	03.IP0009.001	I-PRO 3 PALLET
0	03.IP0011.001	I-PRO 3 SIDE PANELS PROTECTION
0	03.ZZ0004.001	PLURIBALL BAG
0	04.ZZ0597.001	LUBRICANT TUBE
0	03.BC0005.001	PLASTIC BAG
4	04.IP0018.001	CONDENSER
6	04.IP0006.002	I-PRO LED LAMP WITH WIRING
8	04.IP0168.001	LID MERCHANDISING, RIGHT
10	04.IP0167.001	LID MERCHANDISING, LEFT
13	04.BA0026.TPS	15,47X3,53 SILICONE O-RING
14	ZZ.VI0005.001	3,5X6,5 SCREW
17	04.IP0166.001	I-PRO BACK MERCHANDISING
19	05.BA0201/D60	GEAR MOTOR H40 115/60 D COMPL.
23	04.BA0257.001	SAFETY MICRO SWITCH
26	02.IP0071.02N	IPROM BLACK RIGHT PANEL WITH TIMER
29	02.IP0084.02N	BLACK FIXING KNOB
30	02.BA0034.001	AUGER FIXING KNOB
31	02.GT0024.001	SECURITY SYSTEM BODY
32	02.GT0025.001	SECURITY LEVER
33	02.IP0017.001	I-PRO TRANSPARENT COVER
34	02.IP0022.01N	I-PRO BLACK DRIP PLATE
35	02.IP0021.01N	I-PRO BLACK EVAPORATOR SUPPORT COVER
36	02.AA0024.001	FOOT

37	02.IP0019.BLK	BLACK DRIP TRAY AND GRATE
38	ZZ.VI0002.001	8x45 SCREW
39	02.IP0020.01N	I-PRO BLACK EVAPORATOR SUPPORT
40	04.IP0027.001	COMPLETE SPRING HOLDER
41	04.IP0049.001	CONSISTENCY ADJUSTMENT SCREW
42	04.IP0101.001	CONSISTENCY SPRING
43	02.IP0072.02N	BACK PANEL
44	04.BA0021.001	TAP SPRING
45	02.BA0002.01N	BLACK TAP LEVER SUPPORT
46	02.BA0004.001	BODY TAP
47	02.BB0101.001	TAP HANDLE WITH HOLE
51	04.BP0026.001	BACK SIDE PANEL KNOB
53	ZZ.VA0004.001	INOX PLUG 4X30
54	02.BA0061.001	LOCKABLE LID KEY
55	02.BA0266.001	SCRAPING SPIRAL
56	02.IP0035.002	I-PRO 3 COMPLETE EVAPORATOR
63	02.IP0003.02N	I-PRO BLACK LEFT SIDE PANEL
68	02.IP0016.002	I-PRO COMPLETE BOWL
71	02.IP0018.01N	I-PRO BLACK SECURITY COVER
72	02.IP0023.001	MERCHANDISING HOLDER, RIGHT
73	02.IP0024.001	MERCHANDISING HOLDER, LEFT
74	02.IP0025.001	I-PRO LED HOLDER
75	02.BC0203.001	BOILER
76	04.BC0052/110	3 BARREL 115/60 COMPLETE ELECTROVALVE
78	04.BB0016/110	82UL-3016 FAN MOTOR
79	04.BC0002/110	FAN MOTOR 25 WATT 110/60
81	02.BB0084.001	FAN MOTOR SUPPORT
82	02.BC0253.001	FAN SUPPORT
83	04.GT1026.001	FAN MOTOR
84	04.BB0003.001	FAN
86	05.BA0100.002	HARD BUSHING WITH SEALING RING
87	02.BA0292.001	NEW SUCTION GASKET
88	02.BA0009.001	REAR BOWL GASKET
89	02.GC0019.001	RULON BUSHING GASKET
90	08.IP0018/115	WIRING
92	04.EC0010.001	CONDENSER FILTER
93	04.IP0034.001	I PRO TIMER SUPPORT
94	04.BC0034/110	CAJ2432Z 115/60 COMPRESSOR
94	04.MP0001/115	COMPRESSOR NT2180GK-G CSR V.115V 60
95	04.BC0049.001	SECONDARY FAN PRESSURE SWITCH
96	04.BC0050.001	CUT-OUT PRESSURE SWITCH
98	02.IP0086.001	NTC 10K PROBE COMPLETE
101	04.ZZ0023.001	PADDING FEET
102	02.IP0092.001	I-PRO 2 PLASTIC FRONT PANEL
103	05.IP0006.002	COMPLETE SHAFT DRIVE
107	02.IP0011.002	I-PRO 3 FRAME
112	02.IP0014.001	I-PRO 3 CONVEYOR
114	02.IP0030.001	EVAPORATOR SUPPORT
115	04.IP0033.001	COVER FOR SWITCH HOLDER
119	04.IP0065.001	VALVE AND COMPRESSOR TIMER
133	04.ZZ0307.001	FILTER
150	04.IP0149.002	LPV-35-24 POWER SUPPLIER
200	02.IP0070.001	TIMER SUPPORT
201	08.IP0019.001	TIMER WIRING
202	04.IP0103.001	GLASS
203	05.BB0005.002	20 AMP PLUG CABLE
204	04.IP0102.001	TIMER
205	04.EC0016.001	FUSE PLUG
300	04.IP0160.001	I-PRO3 LED PANEL STICKER
319	05.BA0022/110	GEARMOTOR FAN
330	08.IP0022.002	I-PRO3M LED PANEL HARNESS
333	02.IP0094.001	WHITE CARTER FOR I-PRO 3 FRONTAL
414	04.GC0227.001	CRATHCO STICKER
844	04.ZZ0003.001	COMPRESSOR CHARGING VALVE
900	08.IP0023.001	I-PRO3 LED PANEL EXTENSION HARNESS